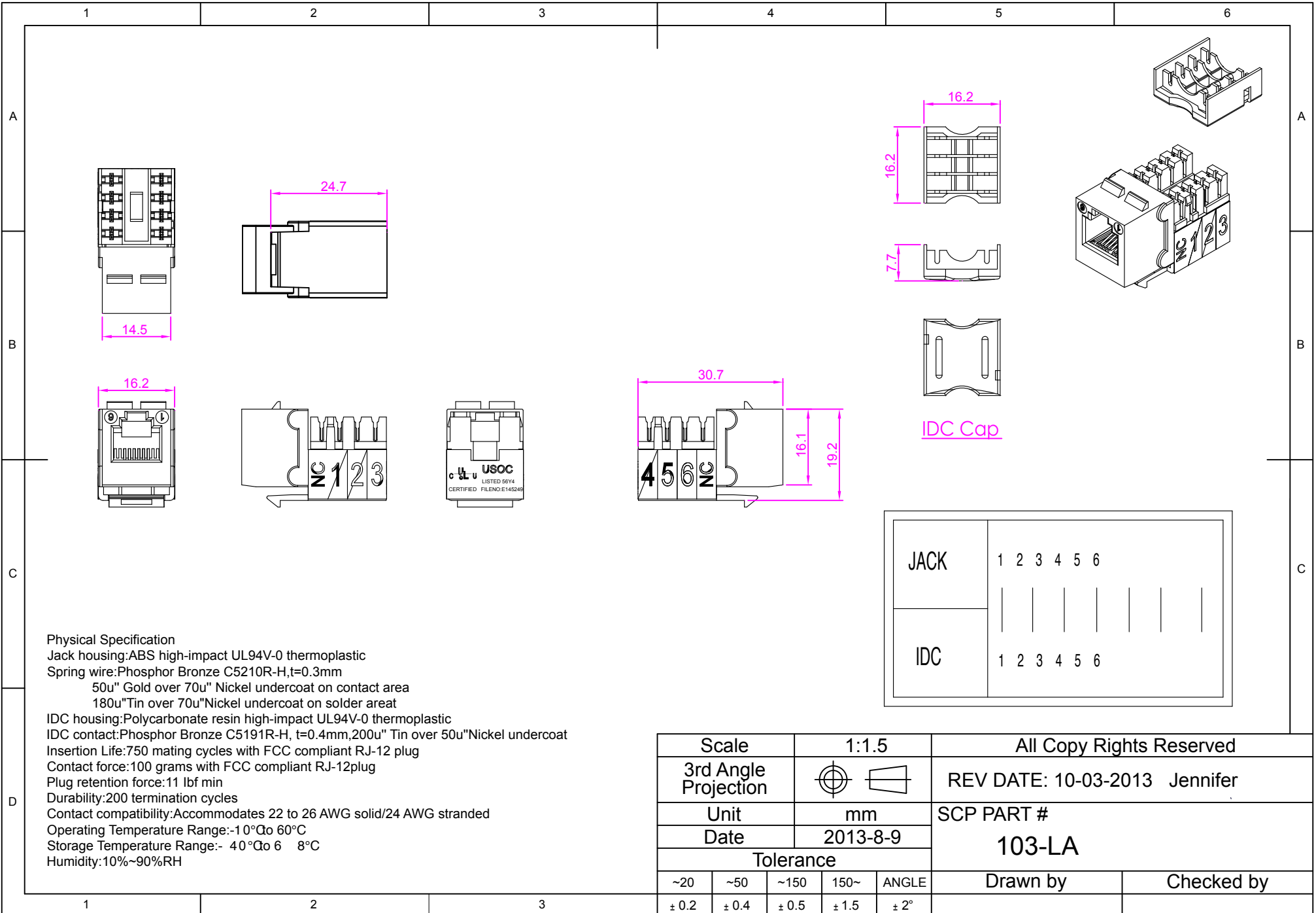




Structured Cable Products

Quality Installations Deserve Quality Products



Physical Specification
 Jack housing: ABS high-impact UL94V-0 thermoplastic
 Spring wire: Phosphor Bronze C5210R-H, t=0.3mm
 50u" Gold over 70u" Nickel undercoat on contact area
 180u" Tin over 70u" Nickel undercoat on solder areat
 IDC housing: Polycarbonate resin high-impact UL94V-0 thermoplastic
 IDC contact: Phosphor Bronze C5191R-H, t=0.4mm, 200u" Tin over 50u" Nickel undercoat
 Insertion Life: 750 mating cycles with FCC compliant RJ-12 plug
 Contact force: 100 grams with FCC compliant RJ-12 plug
 Plug retention force: 11 lbf min
 Durability: 200 termination cycles
 Contact compatibility: Accommodates 22 to 26 AWG solid/24 AWG stranded
 Operating Temperature Range: -10°C to 60°C
 Storage Temperature Range: -40°C to 68°C
 Humidity: 10%~90%RH

JACK	1	2	3	4	5	6
IDC	1	2	3	4	5	6

Scale	1:1.5	All Copy Rights Reserved				
3rd Angle Projection		REV DATE: 10-03-2013 Jennifer				
Unit	mm	SCP PART #				
Date	2013-8-9	103-LA				
Tolerance						Drawn by
~20	~50	~150	150~	ANGLE		Checked by
± 0.2	± 0.4	± 0.5	± 1.5	± 2°		