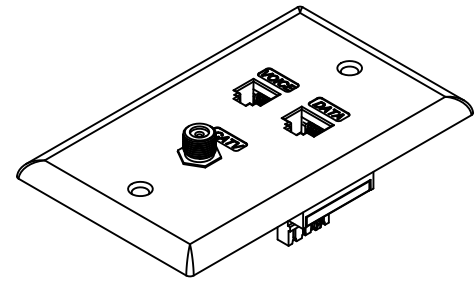
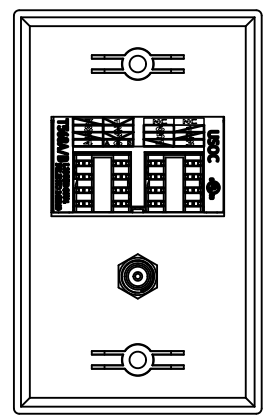
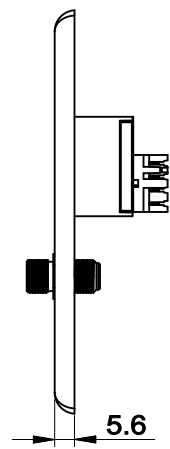
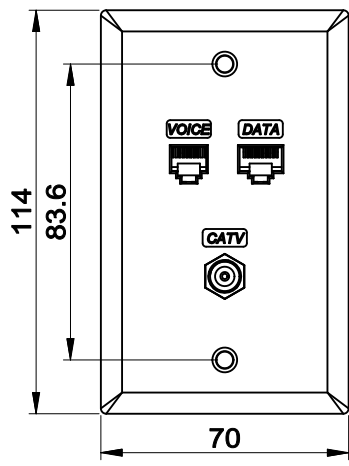
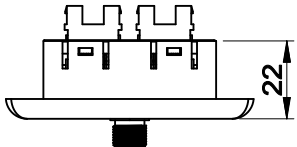


<b>Part Number:</b>	<b>Jacket Color:</b>
123-AL	Almond
123-WT	White



T568A/B		
7 W/BR	(T568A) 1 W/GN	(T568B) W/OR
8 BR	2 GN	OR
5 W/BL	3 W/OR	W/GN
4 BL	6 OR	GN

USOC		
6 GN	NC	1 W/GN
5 OR		2 W/OR
4 W/BL		3 BL

ACCORDING TO : ANSI/TIA-568-C.2  
ISO/IEC 11801 2nd Edition  
IEC 60603-7

**MATERIAL**

FACEPLATE : ABS,UL94V-0.  
JACK CONTACTS : PHOSPHOR BRONZE,50U" GOLD PAINTING.  
IDC PLASTIC : ABS,UL94V-0.  
IDC TERMINALS : PHOSPHOR BRONZE,NICKEL PLATED.

**PHYSICAL CHARACTERISTICS**

SUITABLE IMPACT TOOL : 110 STYLE PUNCH DOWN TOOL.  
SURFACE FINISH : OR TEXTURE.  
INSERTION LIFE : 750 MATING CYCLES WITH FCC COMPLIANT 8P PLUG.  
CONTACT FORCE : 100 GRAMS WITH FCC COMPLIANT 8P PLUG.  
PLUG RETENTION FORCE : 11 LBF MIN.  
DURABILITY : 200 TERMINATION CYCLES.  
CONTACT COMPATIBILITY : ACCOMMODATES 22 TO 24 AWG SOLID.  
OPERATING TEMPERATURE RANGE : -10 °C TO 60 °C.  
STORAGE TEMPERATURE RANGE : -40 °C TO 68 °C.  
HUMIDITY : 10%~90%RH.

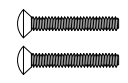
**ELECTRICAL**

INSULATION RESISTANCE : 500 MΩ.  
DIELECTRIC WITHSTANDING VOLTAGE : 1000 V AC.  
DC CURRENT RATING : 1.5 Amps.  
DC RESISTANCE : 0.1Ω.  
CONTACT RESISTANCE : 20mΩ.

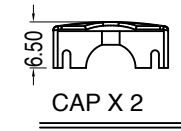
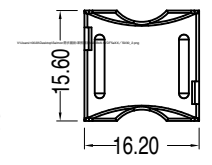
**NOTE**

- WILL NOT SUPPORT CHANNEL SHORTER THAN 15M.
- ONLY ACCEPT RJ-45 8P8C PLUG.

**ENCLOSURE PARTS:**



K4 6 X 25mm SCREW X 2



**ENCLOSURE**

IDC CAP X 1 PC  
SCREW X 2 PCS  
INSTRUCTION X 1 PC

**Cat 5e**

56Y4  
E145249



Scale	1:2	All Copy Rights Reserved			
3rd Angle Projection		REV DATE 04/22			
Unit	mm	SCP PART #			
		<b>123-XX</b>			
<b>Tolerance</b>					
~20	~50	~150	150~	ANGLE	
±0.2	±0.4	±0.5	±1.5	±2°	