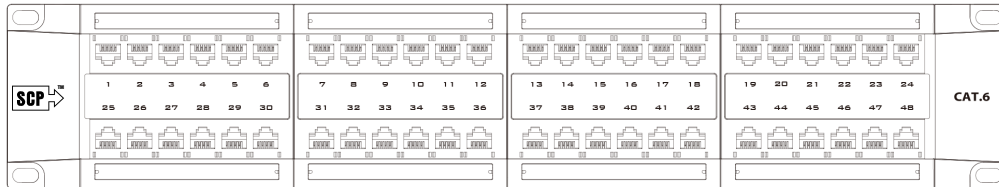




SCP Part No. 348-6

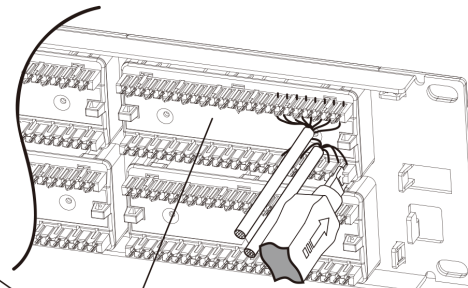
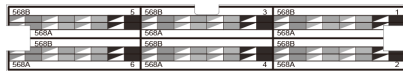
48 PORT LOADED - CAT6 UTP PATCH PANEL | 2RU
 - 1 EA/BOX

MODULAR JACK PANEL CABLING INSTRUCTIONS



Front View

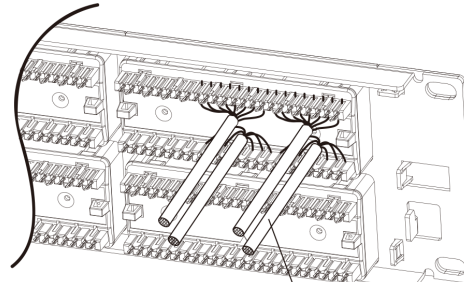
Wiring Label



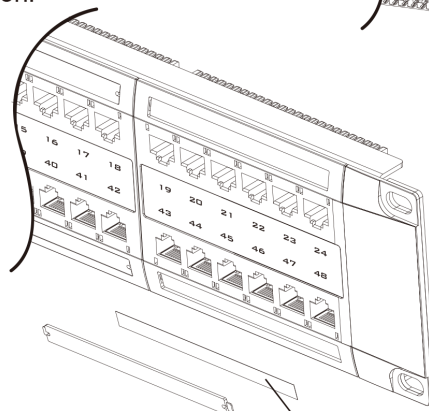
1. Punch down cables to 110/Krone IDC Connector according to TIA568A/B wiring instruction label.

2. Punch down solid cable to each port until termination is completed.

3. Write port description on label and then put on the plastic cover to finish the installation.



Solid Cable



Write on description label protected by clear plastic cover.

N6042000A50702