

| PLUG AND PLAY INSTALLATION |

Before installing the cable, make sure that you have an HDMI graphic card or devices with an HDMI port (for example, a PC, laptop, DVD/Blu-ray player or any other video/audio signal source device).

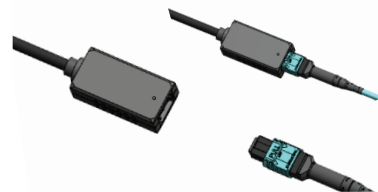


998-DO-EXT can be damaged if it is excessively pinched or twisted when being installed and after being installed. Make sure not to bend or twist the cable tightly.

| INSTALLATION |

The 998-DO-EXT HDMI dongle extender kit is designed to work with the specially designed SCP pre-terminated SCP-EasyFiber™ patch cords with MPO connectors (Part number series EFP-998-P-XX and EFP-998-LSZH-XX). SCP EasyFiber is an ultra-bendable optical fiber that is designed for in-wall or outdoor installations. The SCP-EasyFiber MPO patch cables are Indoor/Outdoor rated and is available in micro-armored UL OFNP and/or LSZH with B2ca EuroClass rating.

1. Unpack the dongle extenders from the box. Notice that one dongle is for the Display side and the other is for the Source side.
2. Remove the MPO/MPO SCP-EasyFiber™ patch cable. (sold separately)
3. For in-wall installations, use the Pulling Capsule by inserting the MPO connector into the plastic capsule and close. The EasyFiber patch cable can then be pulled through conduit or installed without conduit behind walls. When installing be sure to always use the pulling capsule as it protects the MPO connector ends.
4. After the EasyFiber patch cable has been installed to the Display and Source device, attach the Display Dongle end to the MPO connector by the Display. Install the Source Dongle end to the MPO connector at the Source device.



5. Remove the (2) USB External Power cords from the box. The 998-DO-EXT dongles require USB external power at the Display device. Plug the power jack into the Display dongle and attach the USB end to the USB port on the Display. [If necessary, USB power may be needed at the Source end as well.]
6. Insert the HDMI connector ends into the HDMI or FRL port on both the Display and Source.
7. DO NOT plug the Display dongle into the Source device and DO NOT plug the Source dongle into the Display device.
8. Power up both the Source and Display devices after Dongles have been connected. If required, connect the USB external power on the Source dongle and Source device USB socket.

Note: The SCP EasyFiber MPO patch cables are available in various lengths. These cables can be daisy chained up to 1000ft/300m. To daisy chain, use the MPO coupler (part EFP-MPO-COU) that can be ordered separately.

| TROUBLESHOOTING |

If you have encountered a problem, check that:

- The source and display devices are both switched on.
- Both HDMI connector heads are fully plugged into the devices.
- The cable jacket is not physically damaged.
- The cable is not bent or twisted.



Note that it is important to connect the cable correctly as marked on the end of each connector: SOURCE to the source device and DISPLAY to the display device.

INSTRUCTION MANUAL

PART NUMBER
998-DO-EXT

48Gbps HDMI Dongle Adapter Extender Kit - TX & RX 8K Dongles, Supports v2.1. HDMI Type A (m) / MPO (f), (2) USB Power cables and (1) Pulling Capsule.

**SCP-EasyFiber patch cable sold separately*



The terms HDMI and HDMI High-Definition Multimedia Interface, and the HDMI Logo are trademarks or registered trademarks of HDMI Licensing LLC in the United States and other countries.

SCP®, the SCP logo, SCP-EasyFiber™, are trademarks of Structured Cable Products, Inc. in the United States and/or other countries.

Other Trademarks and trade names may be used that refer to entities claiming the marks and names or their products. Structured Cable Products Inc. disclaims proprietary interest in the marks and names of others.

PART NUMBER:
998-DO-EXT

DESCRIPTION

The **998-DO-EXT** dongle adapter extender kit is the most advanced and competitive solution on the market. The optic fiber cable is thinner, more flexible, and outperforms other brands.

The **998-DO-EXT** supports the latest HDMI standards including 8K@60, 4:2:0, 48Gbps, Dynamic HDR, Multi-Channel Audio, EDID, CEC, HDCP2.3, e-ARC.

The **998-DO-EXT** consists of a set of two HDMI type A to MPO Female dongle adapters. This design is easy to install and easy to upgrade.



Figure 1: 998-DO-EXT

KEY FEATURES

- T-Grip for HDMI plug
- 8K@ 60 4: 2: 0 48Gbps
- Plug and Play Installation
- Thinner, Lighter and More Flexible
- Detachable design Dongle - HDMI Type A (m) / MPO (f)
- High EMI protection
- External Power for high compatibility
- HDR, EDID, CEC HDCP2.3, eARC

APPLICATIONS

- Digital Signage
- LED signboards in streets and in stadiums
- Medical Imaging Equipment
- Airplane On- board Video System
- Home Theater
- Blu-ray, 3D video, Projector, Set-up box, DVR, Game Consoles and Computer Systems
- TV Broadcast Station
- Conference Room Video Equipment
- Security systems

INCLUDED IN BOX

- (1set) 998-DO-EXT
- (2pc) MPO Protector
- (1pc) Pulling Capsule
- (2pc) Power Cord for 5V power supply
- (1pc) Installation Manual

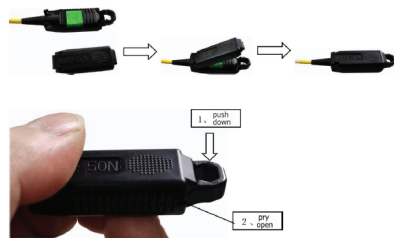


Figure 2: MPO Protector

DONGLE DIMENSIONS



Figure 3: HDMI Connectors - SOURCE and DISPLAY
(Dimensions in mm)



Figure 4: Attaching the Pulling Tool

SPECIFICATIONS

Audio and Video	
Video Resolution	Up to 8K@60Hz (4:2:0)
Embedded Audio Support	PCM Sch, Dolby Digital True HD, DTS-HD Master Audio, eARC
HDMI Support	HDCP 2.2&2.3, Dynamic HOR, EDID, CEC
Cable Assembly	
HDMI Connector	Male HDMI Type A Connector
Dimensions	Type A: 44.2W x 12.7H x 7.1D mm Type MPO : 48.2W x 20H x 10D mm
Cable Structure	Optical Fiber Cable
Jacket Material	PVC
Jacket Color	5.0 mm
Cable Bending Radius	10 cm
Pulling Strength	40 N
DC Cable	External 5V Power Supply Cable
Power	
Power Supply HDMI	From the external USB connector on the display side
Power Consumption	0.7W
General	
Operating Temperature	0° to +50°C (32° to 122°F)
Storage Temperature	-20 ° to +1°C(-4° to 33°F)
Storage Humidity	65% RH
Available Length	0.02m