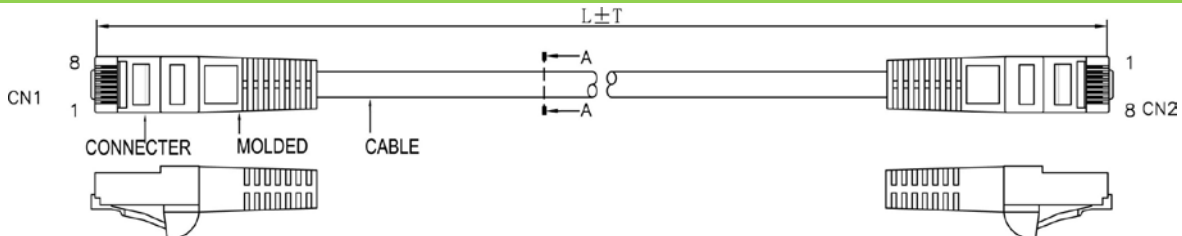


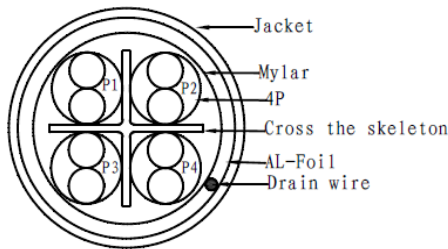
**C6PCSH LSZH PATCH CABLE**

1/16

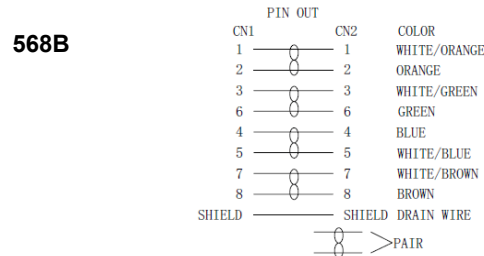
**Construction**



**CAT6 Cross section**



**PIN & OUT**



**Construction**

**F/UTP CAT.6**

<b>Center Conductor:</b>	<b>26AWG stranded bare copper</b>
Construction	7×0.16mm
Dia.(in/mm)	0.019/0.48
<b>Insulate</b>	<b>HDPE</b>
Nom. Thickness(in/mm)	0.010/0.27
Insulation Dia.(mm)	0.034/0.86
Color Cord	Pair 1: Blue-White/Blue Pair 2: Orange-White/Orange Pair 3: Green-White/Green Pair 4: Brown-White/Brown
Pairs	4
Filler	PE Skeleton
Cabling	4Pairs with skeleton
<b>Mylar</b>	PET
<b>Drain Wire</b>	<b>7/0.16mm Tinned Copper Wire</b>
<b>Shielding</b>	<b>Aluminum foil</b>
<b>Jacket</b>	<b>LSZH</b>
Nom. Thickness(in/mm)	0.024/0.60
Min. Thickness(in/mm)	0.019/0.48
Cable Dia.(in/mm)	0.248/6.30
Color	Black

**Printing:**  
STRUCTURED CABLE PRODUCTS CAT6 PATCH CABLE  
F/UTP 4PR 26AWG ANSI/TIA-568-C.2

**CONNECTER**

<b>Connector</b>	<b>RJ45(8P8C) MALE CAT6</b>
Insulation	Clear Polyester, UL94V-2
Contacts	Brass, Gold Plated 3u

**CAT6 F/UTP PATCH CABLE**

Molded material	PVC
Pin&Out	EIA/TIA 568B (view the Pin&Out)
Length	view packing data
<b>Packing</b>	1pcs/bag view packing data

**Performance**

**Electrical Characteristics:[@68°F.(20°C.)]**

**Cat.6 CHANNEL TEST (MHz/dB/dB)**

Freq.	RL	NEXT	Freq.	RL	NEXT
1	19	65	31.25	16.5	48.4
4	19	63	62.5	14.5	43.4
8	19	58.2	100	12	39.9
10	19	56.6	125	11	38.3
16	19	53.2	200	9	34.8
20	17.5	51.6	250	8	33.1
25	17	50			

Conductor DCR (Ω/100m)	≤9.6
Unbalance of Pair DCR (%)	≤5
Dielectric strength between Pairs(kV/min)	≤1
Insulation resistance (MΩ·km)	≥5000
Capacitance (nF/100m)	≤5.6
Dielectric strength between Pairs(kV/min)	≤330
Characteristic impedance (Ω)	100±15
Short or Open of the loop	None

**Mechanical Characteristics:**

Operating Temperature Range(°C)	-40~75
---------------------------------	--------

**Packing data**

Length (m)	TOL. (mm)	pcs/carton	N.W. (lbs/kgs)	G.W. (lbs/kgs)
1	30	200	18.74/ 8.5	20.94/ 9.5
2	30	120	24.25/ 11	26.46/ 12
3	50	100	25.35/ 11.5	27.56/ 12.5
5	50	60	27.56/ 12.5	29.76/ 13.5