



SCP PART#: F-KS-MM2S-SCSC

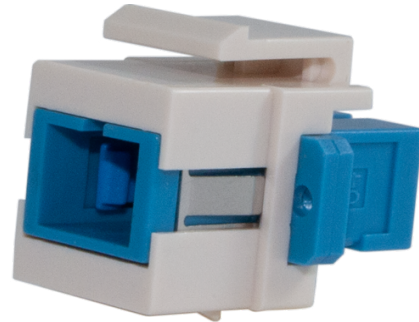
UPC: 817777011975

DESCRIPTION:

Fiber optic keystone adapter -- simplex SC to SC -- OS2

Features at a Glance

- Simplex SC to Simplex SC
- Single mode (OS2) compatible
- High precision ceramic sleeve
- For UPC polish type cables
- Low insertion loss
- White keystone color
- Snap-in design



Keystone snap-in modules provide feed-through patching via any industry-standard keystone patch panel or wallplate and connect two single mode fiber optic cables while contributing to a clean and professional installation.

Physical Specifications	
Connector Type (End A)	Female simplex SC
Connector Type (End B)	Female simplex SC
Polish Type	UPC / UPC
Coupler Style	Keystone
Color	Keystone: white Coupler: dark blue
Mechanical Specifications	
Fiber Type	Single mode OS2
Supported Fiber Count	Simplex (1 strand)
Housing Material	ABS+PC plastic (UL 94V-0)
Locking Clip Material	Phosphor Bronze
Environmental Specifications	
Operating Temperature	-4 - 158°F (-25 - 70°C)
Storage Temperature	-40 - 185°F (-40 - 80°C)
Operating Humidity	0 – 95%, non-condensing