

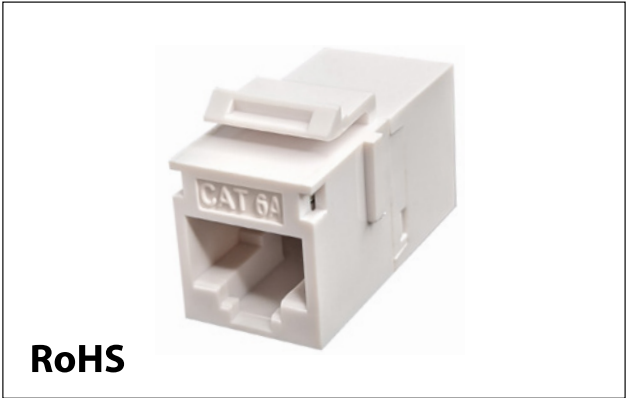
10G UNSHIELDED KEYSTONE COUPLER  
 INLINE/SLIM STYLE, CAT6A UTP - 1EA BAG/10PC MASTER PACK

SCP PART#:  
**KCOU-10GU-WT**  
**KCOU-10GU-BK**

**PRODUCT SUMMARY**

Keystone Unshielded 10G Cat6a UTP RJ45 couplers provide feed-through patching via any industry-standard patch panel, keystone wall plate, or surface mount box.

The snap-in RJ45 Cat6a connector jack is simple to install and provides a robust female to female in-line RJ45 Cat6a connector coupler.



**FEATURES & BENEFITS**

- Female to Female CAT6A UTP RJ45 Keystone Coupler
- 50µ Gold Plated
- Snap-in design / Slim Style
- Available in 10 packs
- RoHS Compliant
- ANSI/TIA 568.2-D
- ISO/IEC 11801 Class Ea
- Available in White - **KCOU-10GU-WT** and Black - **KCOU-10GU-BK**
- Compatible with SCP Keystone Snap-On ID Bars (p/n: KJ-BARS - sold separately)



**SPECIFICATIONS**

<b>Electrical Specification</b>	
Insulation Resistance	>= 500 MΩ
Dielectric Withstand Volt	100VAC RMS 60Hz
Contact Resistance	<= 20 mΩ
Current Rating	1.5A at 68°F
<b>Mechanical Specifications</b>	
Plug insertion Life	>=750 times plug in
Contact Force	99.2g (3.5oz) FCC Plug
Plug Retention Force	30lb (133n/13.3Kg)
Temperature Test	-40 to 150°F (-40 to 66°C)
Contact Plating	50u" over contact area
Material	Polycarbonate, 94V0 rated