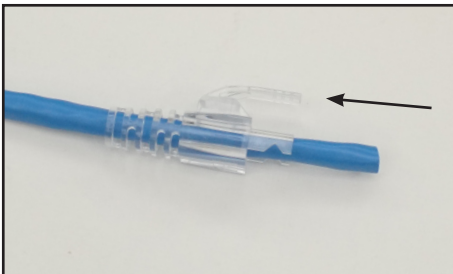


BEST PRACTICES FOR TERMINATING CAT5E UTP

P/N: S45-1500 & S45-1501



STEP 1



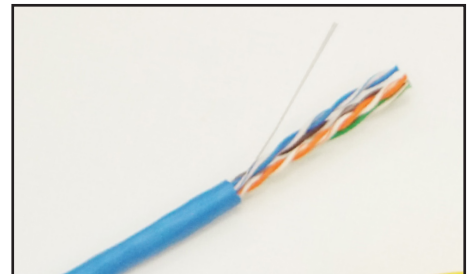
If using strain relief/boot, insert the boot onto the cable as shown.

STEP 2



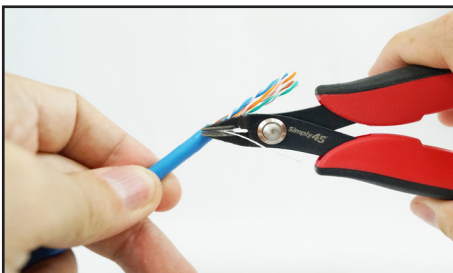
Using the Adjustable Cable Stripper (Part: S45-S01YL/S01BL), strip back the cable jacket about 1.5 inches (3.8cm)

STEP 3



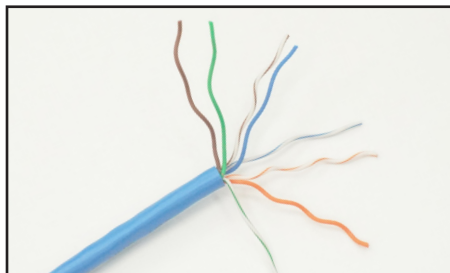
Be sure not to nick the wire insulation. If you nick the wire insulation, cut the cable off for all exposed wire cable pairs and re-strip the cable.

STEP 4



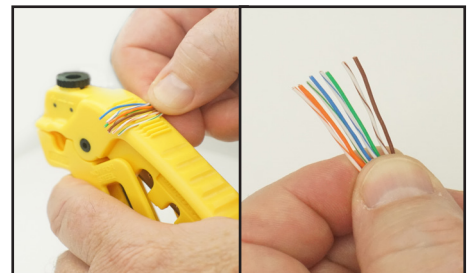
Trim off the "rip cord" at the cable jacket using Simply45 Flush Cutter (Part: S45-801).

STEP 5



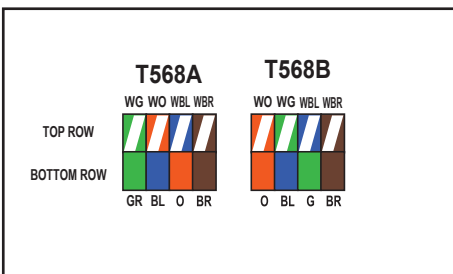
Separate each wire pair by untwisting.

STEP 6



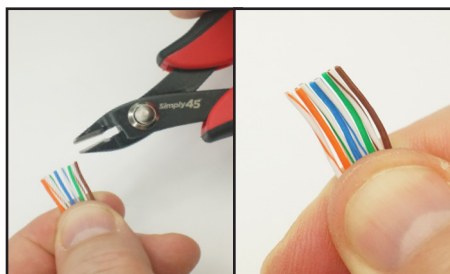
Straighten each wire conductor.
Hint: Use wire straightening comb on top of Adjustable Stripper for faster straightening and less finger fatigue.

STEP 7



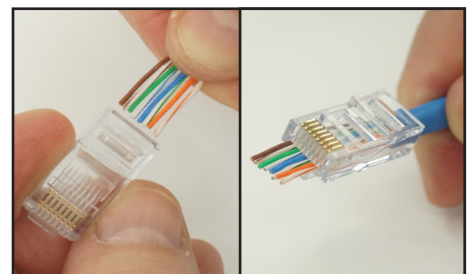
Align wires according to Termination Pattern either Type A or Type B.
Hint: Hold wire so that the White Orange and Orange wires are closest to you and put in wire pattern order 1-8.

STEP 8



Using a flush cutter, trim the wires straight across so all of the wires are the same length.

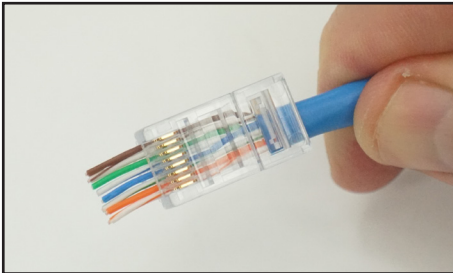
STEP 9



Hold the RJ45 plug upside down (strain relief clip facing down). Insert the wires into the back of the plug until they come out the front of the plug at least 1/2 inch (1.27cm).

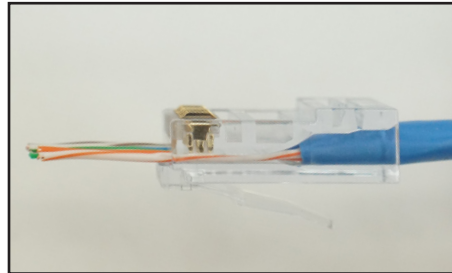
BEST PRACTICES FOR TERMINATING CAT5E UTP

STEP 10



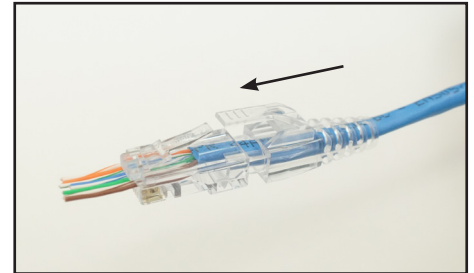
Make sure each wire is still in the correct pattern order.

STEP 11



Push the plug as far down onto the cable until it stops inside the plug.
Hint: Be sure cable goes in as far as possible to minimize the exposed untwisted wires inside the plug. Notice the wedge inside the plug stopping the cable.

STEP 12



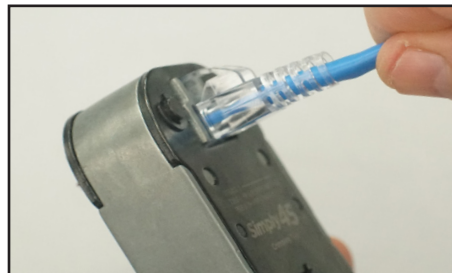
If using strain relief/boot, slide the boot up and into the back of the plug until the boot clip covers the top of the plug clip.

STEP 13



Insert the plug into the crimping socket on the **S45-C100/S45-C101** Simply45 pass through crimper.

STEP 14



Make sure plug goes completely inside the crimping socket.

STEP 15



With one hand, firmly without stopping, compress the crimper handles all the way down in one steady non-stop motion.

STEP 16



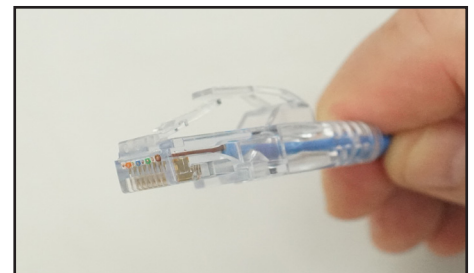
The Simply45 crimper is a ratcheted crimper. The crimper will not open up until the crimping process has been fully completed. This assures that the wire trims and pin sets have been done correctly.

STEP 17



If the crimper handles do not release this means that you have not completed the crimping cycle. Simply squeeze the crimper handles further down until the crimper handles release.

STEP 18



Then remove the terminated RJ45 plug from the crimping socket. Quickly inspect that all wires have been closely trimmed to the plug in the front.

Note: If you are experiencing wire trims that are not being trimmed flush to the plug, you may need to change your trimming blade as the blade may have become dull. Please follow blade changing instructions.

Simply45[®] is a trademark of Simply45 LLC © All rights reserved.