

106A Shielded Modular Plug Instructions

SCP PART #: 106A

FITS SCP CABLES: CAT6 Shielded | HNCPROPLUS+™ Shielded | CAT6A | CAT6A-U/FTP

Use with SCP Part #: 803 (Professional Cat6/6A Shielded RJ45 Crimp Tool)

STEP 1. Carefully strip 1 inch (25.4 mm) of the jacket from the cable to expose the insulated wire conductors. Peel back the insulation from the conductors. cut spline separation equal with PVC jacket.

STEP 2. Untwist the wires and arrange the wires according to TIA/EIA 568A & 568B standards. See the SCP RJ45 wiring diagram for A & B Pattern (Image 2). Cut the wire at a 45 degree angle. (Image 3) Insert wires into the load bar. Position the load bar as close to the jacket as possible. Cut excess cable leaving about 1/4 inch (6.35 mm) to reach the termination point (Image 4)

STEP 3. Put Plug into the crimp tool (SCP Part#: 803) in the right position (Image 6). Squeeze the tool to push the contact blades into correct positions (Image 7).

STEP 4. Push metal strain relief down to hold the cable with foil screen or drain wire. Place the metal strain relief at the right position (Image 8). Squeeze the tool for holding the cable tightly and grounding (Image 9).

STEP 5. Completion (Image 10).

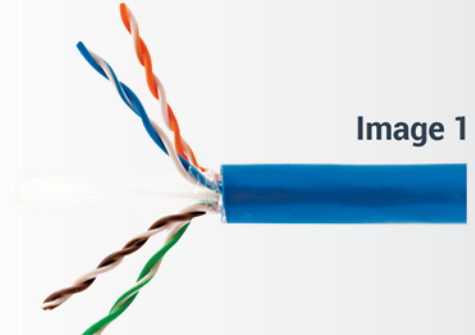


Image 1



Wire #	1	2	3	4	5	6	7	8
T568A	W/G	G	W/O	BL	W/BL	O	W/BR	BR
T568B	W/O	O	W/G	BL	W/BL	G	W/BR	BR

Image 2



Image 3

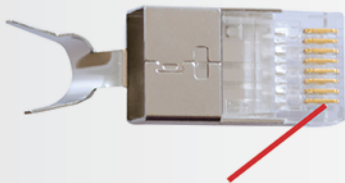


Image 4

Image 3: Make the cut at a 45 degree angle. This will help you insert the conductor into the load bar.

Image 4: Leaving about 1/4 inch. (6.35 mm)

Image 5



Termination point.

Image 6



Image 7



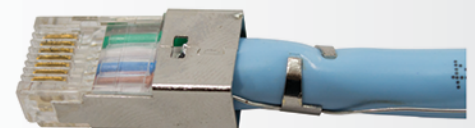
Image 8



Image 9



Image 10



Corporate Office:

5607 Hiatus Road, Suite 500 Tamarac, FL 33321 | USA
www.scpca5e.com | sales@scpcat5e.com | +1-954-327-5770



Structured Cable Products™
Quality Installations Deserve Quality Products