



**SCP PART#: F-COU-MMD-LCLC**

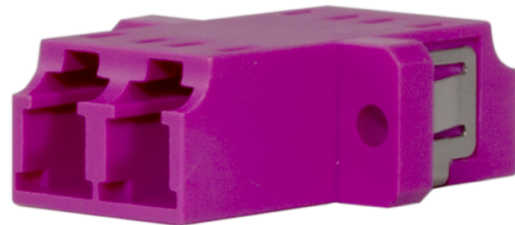
UPC: 817777011920

**DESCRIPTION:**

Fiber optic coupler - duplex multimode OM4 LC to LC coupler

Features at a Glance

- Duplex LC to Duplex LC
- Multimode (OM2, OM3, OM4) compatible
- 13mm panel mount
- High precision ceramic sleeve
- Stainless steel clip
- For UPC polish type cables
- Low insertion loss
- Rated for 1000 plug cycles



Fiber optic couplers provide feed-through patching via any industry-standard patch panel accommodating 13mm panel mount couplers. They connect two multimode fiber optic cables while contributing to a clean and professional installation.

| <b>Physical Specifications</b>      |                           |
|-------------------------------------|---------------------------|
| Connector Type (End A)              | Female duplex LC          |
| Connector Type (End B)              | Female duplex LC          |
| Polish Type                         | UPC / UPC                 |
| Coupler Style                       | Panel mount               |
| Color                               | Pink                      |
| <b>Mechanical Specifications</b>    |                           |
| Insertion Loss                      | <0.2dB                    |
| Fiber Type                          | Multimode OM2, OM3, OM4   |
| Supported Fiber Count               | Duplex (2 strand)         |
| Housing Material                    | ABS+PC plastic (UL 94V-0) |
| Locking Clip Material               | Stainless steel           |
| <b>Environmental Specifications</b> |                           |
| Operating Temperature               | -4 - 158°F (-25 - 70°C)   |
| Storage Temperature                 | -40 - 185°F (-40 - 80°C)  |
| Operating Humidity                  | 0 – 95%, non-condensing   |
| Regulatory                          | RoHS                      |