



**SCP PART#: F-KS-MM4D-LCLC**

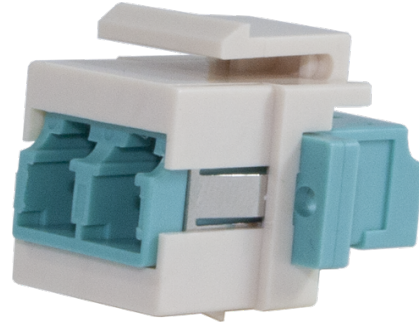
UPC: 817777013429

**DESCRIPTION:**

Fiber optic keystone adapter -- duplex LC to LC -- OM3/OM4

Features at a Glance

- Duplex LC to Duplex LC
- Multimode (OM2, OM3, OM4) compatible
- High precision ceramic sleeve
- For UPC polish type cables
- Low insertion loss
- White keystone color
- Snap-in design



Keystone snap-in modules provide feed-through patching via any industry-standard keystone patch panel or wallplate and connect two multimode fiber optic cables while contributing to a clean and professional installation.

<b>Physical Specifications</b>	
Connector Type (End A)	Female duplex LC
Connector Type (End B)	Female duplex LC
Polish Type	UPC / UPC
Coupler Style	Keystone
Color	Keystone: white Coupler: aqua
<b>Mechanical Specifications</b>	
Fiber Type	Multimode OM2, OM3, OM4
Supported Fiber Count	Duplex (2 strand)
Housing Material	ABS+PC plastic (UL 94V-0)
Locking Clip Material	Phosphor Bronze
<b>Environmental Specifications</b>	
Operating Temperature	-4 - 158°F (-25 - 70°C)
Storage Temperature	-40 - 185°F (-40 - 80°C)
Operating Humidity	0 – 95%, non-condensing