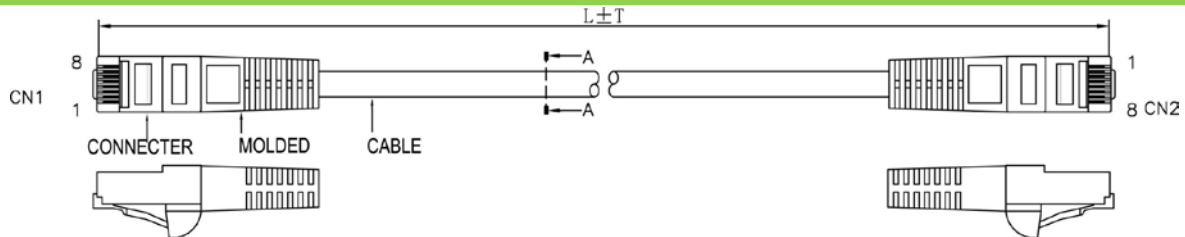


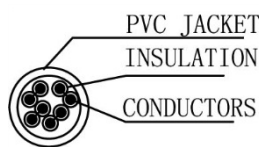
SCP Part Number: C5PC-3-GY

REV.A

Construction

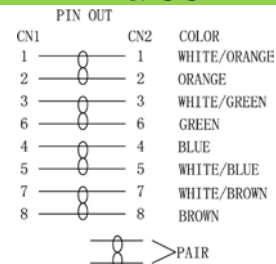


CAT5e Cross section



PIN & OUT

568B



Construction

UTP CAT.5e

Center Conductor:	24AWG stranded bare copper
Construction	7×32AWG
Dia.(in/mm)	0.024/0.60
Insulate	HDPE
Nom. Thickness(in/mm)	0.006/0.17
Insulation Dia.(in/mm)	0.038/0.98
Color Cord	Pair 1: Blue-White/Blue Pair 2: Orange-White/Orange Pair 3: Green-White/Green Pair 4: Brown-White/Brown
Pairs	4
Cabling	4Pairs with skeleton

Jacket	PVC
Nom. Thickness(in/mm)	0.024/0.60
Min. Thickness(in/mm)	0.019/0.48
Cable Dia.(in/mm)	0.209/5.30
Color	Black & Blue & Green & Gray Red & White & Yellow & Orange & Ivory

Printing:
STRUCTURED CABLE PRODUCTS CAT.5E PATCH CABLE
UTP 4PR 24AWG TYPE CM (UL) C(UL) EXXXXXX

CONNECTER

Connector	RJ45(8P8C) MALE CAT5e
Insulation	Clear Polyester, UL94V-2
Contacts	Brass, Gold Plated 3u

CAT6 PATCH CABLE

Molded material	PVC
Pin&Out	EIA/TIA 568B (view the Pin&Out)
Length	view packing data

Packing	1pcs/bag view packing data
----------------	-------------------------------

Performance

Electrical Characteristics:[@68°F.(20°C.)]

Cat.5e CHANNEL TEST (MHz/dB/dB/dB)

Freq.	NEXT	ATTN	RL	Freq.	NEXT	ATTN	RL
1	60	3	17	20	42	10.2	17
4	53.6	4.5	17	25	40.4	11.4	16
8	48.6	6.3	17	31.3	38.7	12.9	15.1
10	47	7.1	17	62.5	33.6	18.6	12.1
16	43.6	9.1	17	100	30.1	24	10
Conductor DCR (Ω/100m)							≤9.6
Unbalance of Pair DCR (%)							≤5
Dielectric strength between Pairs(kV/min)							≤1
Insulation resistance (MΩ·km)							≥5000
Capacitance (nF/100m)							≤5.6
Dielectric strength between Pairs(kV/min)							≤330
Characteristic impedance (Ω)							100±15
Short or Open of the loop							None

Mechanical Characteristics:

Operating Temperature Range(°C)	-15~75
---------------------------------	--------

Packing data

Length (ft)	TOL. (in)	pcs/carton	G.W. (lbs/kgs)	Color
1	1.18	300	18.74/ 8.5	Black
3	1.18	200	23.15/ 10.5	Blue
5	1.97	150	23.15/ 10.5	Green
7	1.97	100	20.5/ 9.3	Gray
10	1.97	70	19.84/ 9	Red
15	1.97	60	23.59/ 10.7	White
25	1.97	50	31.31/ 14.2	Yellow
50	1.97	20	24.91/ 11.3	Orange
100	1.97	16	38.14/ 17.3	Ivory
(m)	(mm)	pcs/carton	(lbs/kgs)	
1	30	300	13.23/ 6	
2	30	90	13.23/ 6	
3	50	70	13.23/ 6	
5	50	40	17.64/ 8	
10	50	25	15.43/ 7	
25	50	12	19.84/ 9	

Part number list

Part number	Length(ft)	Color	Part number	Length(ft)	Color
C5PC-1-BK	1	Black	C5PC-50-BK	50	Black
C5PC-1-BL	1	Blue	C5PC-50-BL	50	Blue
C5PC-1-GN	1	Green	C5PC-50-GN	50	Green
C5PC-1-GY	1	Gray	C5PC-50-GY	50	Gray
C5PC-1-OR	1	Orange	C5PC-50-OR	50	Orange
C5PC-1-RD	1	Red	C5PC-50-RD	50	Red
C5PC-1-WT	1	White	C5PC-50-WT	50	White
C5PC-1-YL	1	Yellow	C5PC-50-YL	50	Yellow
C5PC-3-BK	3	Black	C5PC-100-BK	100	Black
C5PC-3-BL	3	Blue	C5PC-100-BL	100	Blue
C5PC-3-GN	3	Green	C5PC-100-GN	100	Green
C5PC-3-GY	3	Gray	C5PC-100-GY	100	Gray
C5PC-3-OR	3	Orange	C5PC-100-OR	100	Orange
C5PC-3-RD	3	Red	C5PC-100-RD	100	Red
C5PC-3-WT	3	White	C5PC-100-WT	100	White
C5PC-3-YL	3	Yellow	C5PC-100-YL	100	Yellow
C5PC-5-BK	5	Black			
C5PC-5-BL	5	Blue			
C5PC-5-GN	5	Green			
C5PC-5-GY	5	Gray			
C5PC-5-OR	5	Orange			
C5PC-5-RD	5	Red			
C5PC-5-WT	5	White			
C5PC-5-YL	5	Yellow			
C5PC-7-BK	7	Black			
C5PC-7-BL	7	Blue			
C5PC-7-GN	7	Green			
C5PC-7-GY	7	Gray			
C5PC-7-OR	7	Orange			
C5PC-7-RD	7	Red			
C5PC-7-WT	7	White			
C5PC-7-YL	7	Yellow			
C5PC-10-BK	10	Black			
C5PC-10-BL	10	Blue			
C5PC-10-GN	10	Green			
C5PC-10-GY	10	Gray			
C5PC-10-OR	10	Orange			
C5PC-10-RD	10	Red			
C5PC-10-WT	10	White			
C5PC-10-YL	10	Yellow			
C5PC-15-BK	15	Black			
C5PC-15-BL	15	Blue			
C5PC-15-GN	15	Green			
C5PC-15-GY	15	Gray			
C5PC-15-OR	15	Orange			
C5PC-15-RD	15	Red			
C5PC-15-WT	15	White			
C5PC-15-YL	15	Yellow			
C5PC-25-BK	25	Black			
C5PC-25-BL	25	Blue			
C5PC-25-GN	25	Green			
C5PC-25-GY	25	Gray			
C5PC-25-OR	25	Orange			
C5PC-25-RD	25	Red			
C5PC-25-WT	25	White			
C5PC-25-YL	25	Yellow			

Part number	Length(m)	Color
C5PC-1M-BK	1	Black
C5PC-1M-IV	1	Ivory
C5PC-2M-BK	2	Black
C5PC-2M-IV	2	Ivory
C5PC-3M-BK	3	Black
C5PC-3M-IV	3	Ivory
C5PC-5M-BK	5	Black
C5PC-5M-IV	5	Ivory
C5PC-10M-BK	10	Black
C5PC-10M-IV	10	Ivory
C5PC-25M-BK	25	Black
C5PC-25M-IV	25	Ivory

Standards	
UL, CE, RoHS	