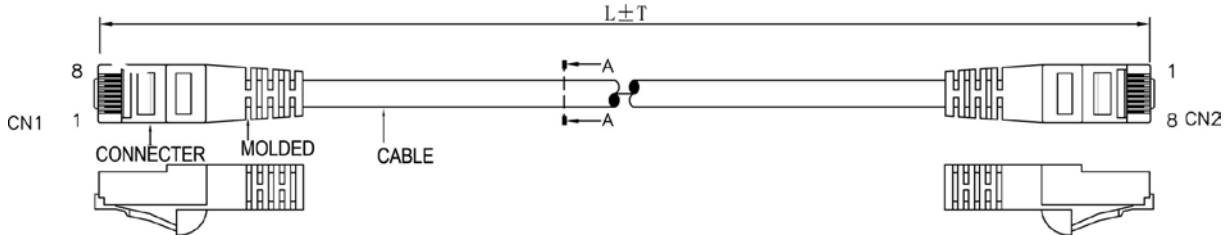


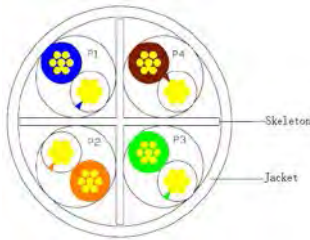
SCP Part Number: C6PC-5-RD

REV.A

Construction



CAT6 Cross section



PIN & OUT

568B

| PIN OUT | | COLOR |
|---------|-----|--------------|
| CN1 | CN2 | |
| 1 | 1 | WHITE/ORANGE |
| 2 | 2 | ORANGE |
| 3 | 3 | WHITE/GREEN |
| 6 | 6 | GREEN |
| 4 | 4 | BLUE |
| 5 | 5 | WHITE/BLUE |
| 7 | 7 | WHITE/BROWN |
| 8 | 8 | BROWN |

> PAIR

Construction

UTP CAT.6

| | |
|--------------------------|--|
| Center Conductor: | 24AWG stranded bare copper |
| Construction | 7×32AWG |
| Dia.(in/mm) | 0.024/0.60 |
| Insulate | HDPE |
| Nom. Thickness(in/mm) | 0.008/0.20 |
| Insulation Dia.(mm) | 0.039/1.00 |
| Color Cord | Pair 1: Blue-White/Blue Pair 2: Orange-White/Orange Pair 3: Green-White/Green Pair 4: Brown-White/Brown |
| Pairs | 4 |
| Filler | PE Skeleton |
| Cabling | 4Pairs with skeleton |
| Jacket | PVC |
| Nom. Thickness(in/mm) | 0.024/0.60 |
| Min. Thickness(in/mm) | 0.019/0.48 |
| Cable Dia.(in/mm) | 0.248/6.30 |
| Color | Black & Blue & Green & Gray Red & White & Yellow |

Printing:
STRUCTURED CABLE PRODUCTS CAT.6 PATCH CABLE
UTP 4PR 24AWG TYPE CM (UL) C(UL) EXXXXXX

CONNECTER

| | |
|------------------|-----------------------------|
| Connector | RJ45(8P8C) MALE CAT6 |
| Insulation | Clear Polyester, UL94V-2 |
| Contacts | Brass, Gold Plated 3u |

CAT6 PATCH CABLE

| | |
|-----------------|---------------------------------|
| Molded material | PVC |
| Pin&Out | EIA/TIA 568B (view the Pin&Out) |
| Length | view packing data |

| | |
|----------------|-------------------------------|
| Packing | 1pcs/bag view packing data |
|----------------|-------------------------------|

Performance

Electrical Characteristics:[@68°F.(20°C.)]

Cat.6 CHANNEL TEST (MHz/dB/dB)

| Freq. | RL | NEXT | Freq. | RL | NEXT |
|-------|------|------|-------|------|------|
| 1 | 19 | 65 | 31.25 | 16.5 | 48.4 |
| 4 | 19 | 63 | 62.5 | 14.5 | 43.4 |
| 8 | 19 | 58.2 | 100 | 12 | 39.9 |
| 10 | 19 | 56.6 | 125 | 11 | 38.3 |
| 16 | 19 | 53.2 | 200 | 9 | 34.8 |
| 20 | 17.5 | 51.6 | 250 | 8 | 33.1 |
| 25 | 17 | 50 | | | |

| | |
|---|--------|
| Conductor DCR (Ω/100m) | ≤9.6 |
| Unbalance of Pair DCR (%) | ≤5 |
| Dielectric strength between Pairs(kV/min) | ≤1 |
| Insulation resistance (MΩ·km) | ≥5000 |
| Capacitance (nF/100m) | ≤5.6 |
| Dielectric strength between Pairs(kV/min) | ≤330 |
| Characteristic impedance (Ω) | 100±15 |
| Short or Open of the loop | None |

Mechanical Characteristics:

| | |
|---------------------------------|--------|
| Operating Temperature Range(°C) | -15~75 |
|---------------------------------|--------|

Packing data

| Length (ft) | TOL. (in) | pcs/carton | G.W. (lbs/kgs) | Color |
|-------------|-----------|------------|----------------|--------|
| 1 | 1.18 | 250 | 16.53/ 7.5 | Black |
| 3 | 1.18 | 150 | 18.74/ 8.5 | Blue |
| 5 | 1.97 | 100 | 18.74/ 8.5 | Green |
| 7 | 1.97 | 80 | 17.64/ 8 | Gray |
| 10 | 1.97 | 70 | 20.94/ 9.5 | Red |
| 14 | 1.97 | 60 | 24.25/ 11 | White |
| 25 | 1.97 | 40 | 27.56/ 12.5 | Yellow |
| (m) | (mm) | pcs/carton | (lbs/kgs) | |
| 1 | 30 | 120 | 13.23/ 6 | |
| 2 | 30 | 80 | 13.23/ 6 | |
| 3 | 50 | 60 | 13.23/ 6 | |
| 5 | 50 | 40 | 17.64/ 8 | |
| 10 | 50 | 20 | 15.43/ 7 | |
| 25 | 50 | 12 | 19.84/ 9 | |

Part number list

| Part number | Length(ft) | Color | Part number | Length(m) | Color |
|-------------|------------|--------|-------------|-----------|--------|
| C6PC-1-BK | 1 | Black | C6PC-1M-BK | 1 | Black |
| C6PC-1-BL | 1 | Blue | C6PC-1M-BL | 1 | Blue |
| C6PC-1-GN | 1 | Green | C6PC-1M-GY | 1 | Gray |
| C6PC-1-GY | 1 | Gray | C6PC-1M-YL | 1 | Yellow |
| C6PC-1-WT | 1 | White | C6PC-2M-BK | 2 | Black |
| C6PC-1-YL | 1 | Yellow | C6PC-2M-BL | 2 | Blue |
| C6PC-3-BK | 3 | Black | C6PC-2M-GY | 2 | Gray |
| C6PC-3-BL | 3 | Blue | C6PC-2M-YL | 2 | Yellow |
| C6PC-3-GN | 3 | Green | C6PC-3M-BK | 3 | Black |
| C6PC-3-GY | 3 | Gray | C6PC-3M-BL | 3 | Blue |
| C6PC-3-WT | 3 | White | C6PC-3M-GY | 3 | Gray |
| C6PC-3-YL | 3 | Yellow | C6PC-3M-YL | 3 | Yellow |
| C6PC-5-BK | 5 | Black | C6PC-5M-BK | 5 | Black |
| C6PC-5-BL | 5 | Blue | C6PC-5M-BL | 5 | Blue |
| C6PC-5-GN | 5 | Green | C6PC-5M-GY | 5 | Gray |
| C6PC-5-GY | 5 | Gray | C6PC-5M-YL | 5 | Yellow |
| C6PC-5-WT | 5 | White | C6PC-10M-BK | 10 | Black |
| C6PC-5-YL | 5 | Yellow | C6PC-10M-BL | 10 | Blue |
| C6PC-7-BK | 7 | Black | C6PC-10M-GY | 10 | Gray |
| C6PC-7-BL | 7 | Blue | C6PC-10M-YL | 10 | Yellow |
| C6PC-7-GN | 7 | Green | C6PC-25M-BK | 25 | Black |
| C6PC-7-GY | 7 | Gray | C6PC-25M-BL | 25 | Blue |
| C6PC-7-WT | 7 | White | C6PC-25M-GY | 25 | Gray |
| C6PC-7-YL | 7 | Yellow | C6PC-25M-YL | 25 | Yellow |
| C6PC-10-BK | 10 | Black | | | |
| C6PC-10-BL | 10 | Blue | | | |
| C6PC-10-GN | 10 | Green | | | |
| C6PC-10-GY | 10 | Gray | | | |
| C6PC-10-WT | 10 | White | | | |
| C6PC-10-YL | 10 | Yellow | | | |
| C6PC-14-BK | 14 | Black | | | |
| C6PC-14-BL | 14 | Blue | | | |
| C6PC-14-GN | 14 | Green | | | |
| C6PC-14-GY | 14 | Gray | | | |
| C6PC-14-WT | 14 | White | | | |
| C6PC-14-YL | 14 | Yellow | | | |
| C6PC-25-BK | 25 | Black | | | |
| C6PC-25-BL | 25 | Blue | | | |
| C6PC-25-GN | 25 | Green | | | |
| C6PC-25-GY | 25 | Gray | | | |
| C6PC-25-WT | 25 | White | | | |
| C6PC-25-YL | 25 | Yellow | | | |

Standards

UL, CE, RoHS