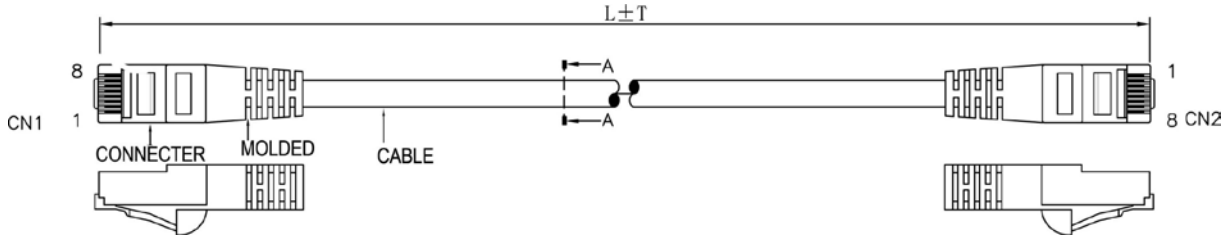


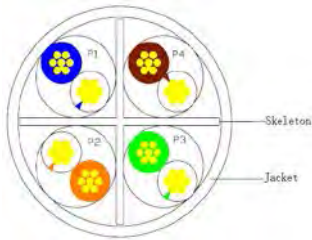
**SCP Part Number: C6PC-7-BK**

REV.A

**Construction**



**CAT6 Cross section**



**PIN & OUT**

**568B**

| CN1 | CN2 | COLOR        |
|-----|-----|--------------|
| 1   | 1   | WHITE/ORANGE |
| 2   | 2   | ORANGE       |
| 3   | 3   | WHITE/GREEN  |
| 6   | 6   | GREEN        |
| 4   | 4   | BLUE         |
| 5   | 5   | WHITE/BLUE   |
| 7   | 7   | WHITE/BROWN  |
| 8   | 8   | BROWN        |

PAIR

**Construction**

UTP CAT.6

|                          |  |
|--------------------------|--|
| <b>Center Conductor:</b> | <b>24AWG stranded bare copper</b>  |
| Construction             | 7×32AWG  |
| Dia.(in/mm)              | 0.024/0.60   |
| <b>Insulate</b>          | <b>HDPE</b>  |
| Nom. Thickness(in/mm)    | 0.008/0.20   |
| Insulation Dia.(mm)      | 0.039/1.00   |
| Color Cord               | Pair 1: Blue-White/Blue<br>Pair 2: Orange-White/Orange<br>Pair 3: Green-White/Green<br>Pair 4: Brown-White/Brown |
| Pairs                    | 4  |
| Filler                   | PE Skeleton  |
| Cabling                  | 4Pairs with skeleton   |
| <b>Jacket</b>            | <b>PVC</b>   |
| Nom. Thickness(in/mm)    | 0.024/0.60   |
| Min. Thickness(in/mm)    | 0.019/0.48   |
| Cable Dia.(in/mm)        | 0.248/6.30   |
| Color                    | Black & Blue & Green & Gray<br>Red & White & Yellow  |

**Printing:**  
STRUCTURED CABLE PRODUCTS CAT.6 PATCH CABLE  
UTP 4PR 24AWG TYPE CM (UL) C(UL) EXXXXXX

**CONNECTER**

|                  |                             |
|------------------|-----------------------------|
| <b>Connecter</b> | <b>RJ45(8P8C) MALE CAT6</b> |
| Insulation       | Clear Polyester, UL94V-2    |
| Contacts         | Brass, Gold Plated 3u       |

**CAT6 PATCH CABLE**

|                 |                                 |
|-----------------|---------------------------------|
| Molded material | PVC                             |
| Pin&Out         | EIA/TIA 568B (view the Pin&Out) |
| Length          | view packing data               |

|                |                               |
|----------------|-------------------------------|
| <b>Packing</b> | 1pcs/bag<br>view packing data |
|----------------|-------------------------------|

**Performance**

**Electrical Characteristics:[@68°F.(20°C.)]**

Cat.6 CHANNEL TEST (MHz/dB/dB)

| Freq. | RL   | NEXT | Freq. | RL   | NEXT |
|-------|------|------|-------|------|------|
| 1     | 19   | 65   | 31.25 | 16.5 | 48.4 |
| 4     | 19   | 63   | 62.5  | 14.5 | 43.4 |
| 8     | 19   | 58.2 | 100   | 12   | 39.9 |
| 10    | 19   | 56.6 | 125   | 11   | 38.3 |
| 16    | 19   | 53.2 | 200   | 9    | 34.8 |
| 20    | 17.5 | 51.6 | 250   | 8    | 33.1 |
| 25    | 17   | 50   |       |      |      |

|   |        |
|---|--------|
| Conductor DCR (Ω/100m)                    | ≤9.6   |
| Unbalance of Pair DCR (%)                 | ≤5     |
| Dielectric strength between Pairs(kV/min) | ≤1     |
| Insulation resistance (MΩ·km)             | ≥5000  |
| Capacitance (nF/100m)                     | ≤5.6   |
| Dielectric strength between Pairs(kV/min) | ≤330   |
| Characteristic impedance (Ω)              | 100±15 |
| Short or Open of the loop                 | None   |

Mechanical Characteristics:

|                                 |        |
|---------------------------------|--------|
| Operating Temperature Range(°C) | -15~75 |
|---------------------------------|--------|

**Packing data**

| Length (ft) | TOL. (in) | pcs/carton | G.W. (lbs/kgs) | Color  |
|-------------|-----------|------------|----------------|--------|
| 1           | 1.18      | 250        | 16.53/ 7.5     | Black  |
| 3           | 1.18      | 150        | 18.74/ 8.5     | Blue   |
| 5           | 1.97      | 100        | 18.74/ 8.5     | Green  |
| 7           | 1.97      | 80         | 17.64/ 8       | Gray   |
| 10          | 1.97      | 70         | 20.94/ 9.5     | Red    |
| 14          | 1.97      | 60         | 24.25/ 11      | White  |
| 25          | 1.97      | 40         | 27.56/ 12.5    | Yellow |
| (m)         | (mm)      | pcs/carton | (lbs/kgs)      |        |
| 1           | 30        | 120        | 13.23/ 6       |        |
| 2           | 30        | 80         | 13.23/ 6       |        |
| 3           | 50        | 60         | 13.23/ 6       |        |
| 5           | 50        | 40         | 17.64/ 8       |        |
| 10          | 50        | 20         | 15.43/ 7       |        |
| 25          | 50        | 12         | 19.84/ 9       |        |

## Part number list

| Part number | Length(ft) | Color  | Part number | Length(m) | Color  |
|-------------|------------|--------|-------------|-----------|--------|
| C6PC-1-BK   | 1          | Black  | C6PC-1M-BK  | 1         | Black  |
| C6PC-1-BL   | 1          | Blue   | C6PC-1M-BL  | 1         | Blue   |
| C6PC-1-GN   | 1          | Green  | C6PC-1M-GY  | 1         | Gray   |
| C6PC-1-GY   | 1          | Gray   | C6PC-1M-YL  | 1         | Yellow |
| C6PC-1-WT   | 1          | White  | C6PC-2M-BK  | 2         | Black  |
| C6PC-1-YL   | 1          | Yellow | C6PC-2M-BL  | 2         | Blue   |
| C6PC-3-BK   | 3          | Black  | C6PC-2M-GY  | 2         | Gray   |
| C6PC-3-BL   | 3          | Blue   | C6PC-2M-YL  | 2         | Yellow |
| C6PC-3-GN   | 3          | Green  | C6PC-3M-BK  | 3         | Black  |
| C6PC-3-GY   | 3          | Gray   | C6PC-3M-BL  | 3         | Blue   |
| C6PC-3-WT   | 3          | White  | C6PC-3M-GY  | 3         | Gray   |
| C6PC-3-YL   | 3          | Yellow | C6PC-3M-YL  | 3         | Yellow |
| C6PC-5-BK   | 5          | Black  | C6PC-5M-BK  | 5         | Black  |
| C6PC-5-BL   | 5          | Blue   | C6PC-5M-BL  | 5         | Blue   |
| C6PC-5-GN   | 5          | Green  | C6PC-5M-GY  | 5         | Gray   |
| C6PC-5-GY   | 5          | Gray   | C6PC-5M-YL  | 5         | Yellow |
| C6PC-5-WT   | 5          | White  | C6PC-10M-BK | 10        | Black  |
| C6PC-5-YL   | 5          | Yellow | C6PC-10M-BL | 10        | Blue   |
| C6PC-7-BK   | 7          | Black  | C6PC-10M-GY | 10        | Gray   |
| C6PC-7-BL   | 7          | Blue   | C6PC-10M-YL | 10        | Yellow |
| C6PC-7-GN   | 7          | Green  | C6PC-25M-BK | 25        | Black  |
| C6PC-7-GY   | 7          | Gray   | C6PC-25M-BL | 25        | Blue   |
| C6PC-7-WT   | 7          | White  | C6PC-25M-GY | 25        | Gray   |
| C6PC-7-YL   | 7          | Yellow | C6PC-25M-YL | 25        | Yellow |
| C6PC-10-BK  | 10         | Black  |             |           |        |
| C6PC-10-BL  | 10         | Blue   |             |           |        |
| C6PC-10-GN  | 10         | Green  |             |           |        |
| C6PC-10-GY  | 10         | Gray   |             |           |        |
| C6PC-10-WT  | 10         | White  |             |           |        |
| C6PC-10-YL  | 10         | Yellow |             |           |        |
| C6PC-14-BK  | 14         | Black  |             |           |        |
| C6PC-14-BL  | 14         | Blue   |             |           |        |
| C6PC-14-GN  | 14         | Green  |             |           |        |
| C6PC-14-GY  | 14         | Gray   |             |           |        |
| C6PC-14-WT  | 14         | White  |             |           |        |
| C6PC-14-YL  | 14         | Yellow |             |           |        |
| C6PC-25-BK  | 25         | Black  |             |           |        |
| C6PC-25-BL  | 25         | Blue   |             |           |        |
| C6PC-25-GN  | 25         | Green  |             |           |        |
| C6PC-25-GY  | 25         | Gray   |             |           |        |
| C6PC-25-WT  | 25         | White  |             |           |        |
| C6PC-25-YL  | 25         | Yellow |             |           |        |

### Standards

UL, CE, RoHS