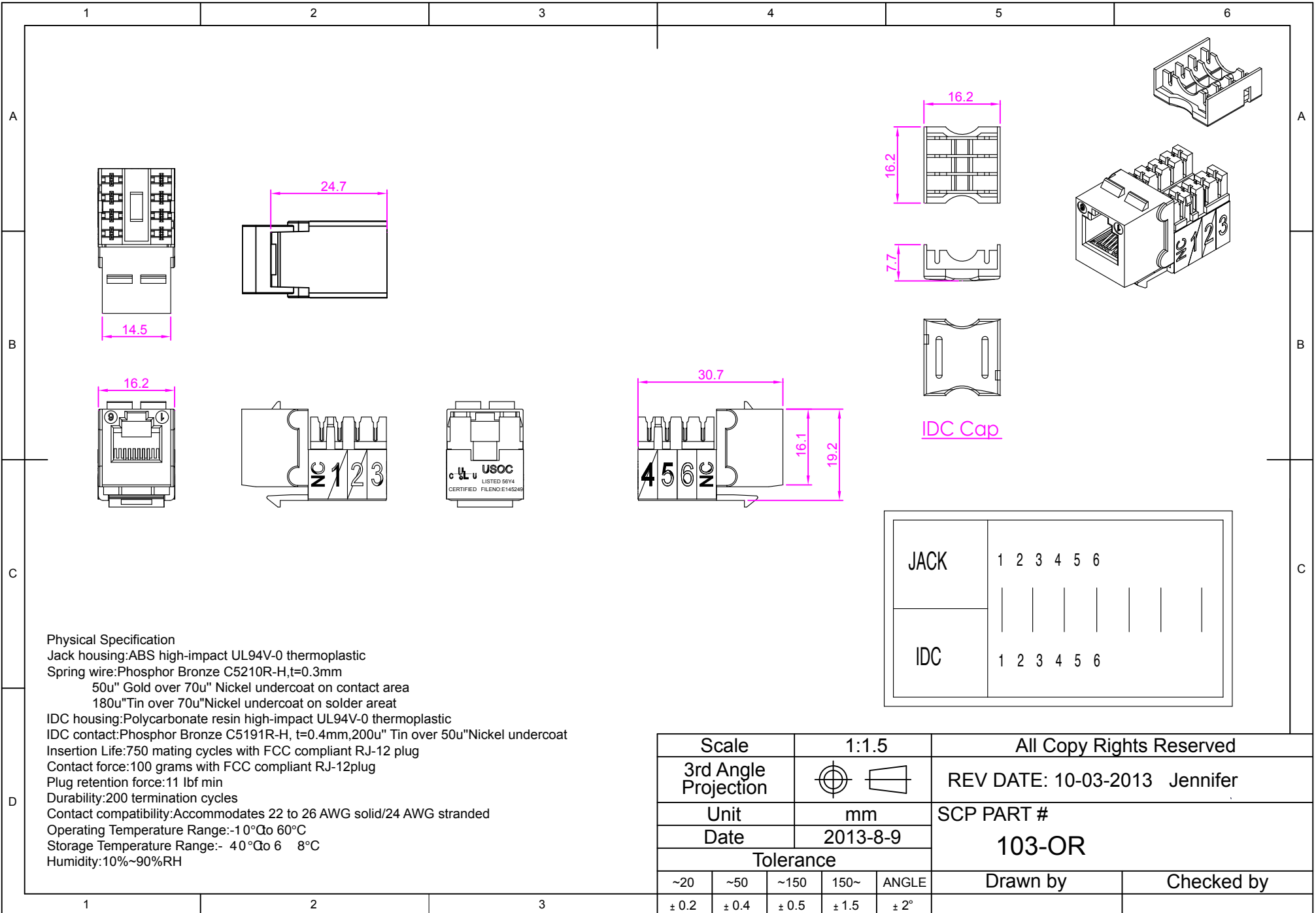




Structured Cable Products

Quality Installations Deserve Quality Products



IDC Cap

JACK	1	2	3	4	5	6
IDC	1	2	3	4	5	6

Physical Specification

Jack housing:ABS high-impact UL94V-0 thermoplastic
 Spring wire:Phosphor Bronze C5210R-H,t=0.3mm
 50u" Gold over 70u" Nickel undercoat on contact area
 180u" Tin over 70u" Nickel undercoat on solder areat
 IDC housing:Polycarbonate resin high-impact UL94V-0 thermoplastic
 IDC contact:Phosphor Bronze C5191R-H, t=0.4mm,200u" Tin over 50u"Nickel undercoat
 Insertion Life:750 mating cycles with FCC compliant RJ-12 plug
 Contact force:100 grams with FCC compliant RJ-12plug
 Plug retention force:11 lbf min
 Durability:200 termination cycles
 Contact compatibility:Accommodates 22 to 26 AWG solid/24 AWG stranded
 Operating Temperature Range:-10°Qo 60°C
 Storage Temperature Range:- 40°Qo 6 8°C
 Humidity:10%~90%RH

Scale	1:1.5	All Copy Rights Reserved				
3rd Angle Projection		REV DATE: 10-03-2013 Jennifer				
Unit	mm	SCP PART #				
Date	2013-8-9	103-OR				
Tolerance						Drawn by
~20	~50	~150	150~	ANGLE	Checked by	
± 0.2	± 0.4	± 0.5	± 1.5	± 2°		